

## Notable Grocery-Anchored Transactions



### PUBLIX AT TATTERSALL PARK

Hoover, AL

Anchor: Publix

Seller: Private

Sale Price: \$18,300,000



### SHOPS AT TRINITY PARK

Simpsonville, SC

Anchor: Sprouts Farmers Market

Offering GLA: 44,424± SF

Occupancy: 100%



### PUBLIX AT EAGLE LANDING

North Fort Myers, FL

Anchor: Publix

Seller: Prudential RE Investors

Sale Price: \$8,325,000



### CORNER LAKES PLAZA

Orlando, FL

Anchor: Publix, & Tractor Supply

Seller: Miller Group Development Corp.

Sale Price: \$15,600,000

\*Publix Exercised ROFR



### PUBLIX AT COSNER'S CORNER

Fredericksburg, VA

Anchor: Publix

Seller: Private

Sale Price: \$15,568,085

\*Publix Exercised ROFR



### COURTYARD SHOPPES

Wellington, FL

Anchor: Publix

Seller: Prudential Real Estate Investors

Sale Price: \$20,700,000



### PUBLIX AT WILMINGTON

Savannah, GA

Anchor: Publix

Seller: Sasser Family Fund

Sale Price: \$5,200,000

\*Publix No ROFR - Made Best Offer



### BOCA VILLAGE SQUARE

Boca Raton, FL

Anchor: Publix, & CVS

Seller: Pension Fund Advisor

Sale Price: \$13,750,000



### SUWANEE JUBILEE

Suwanee, GA

Anchor: The Fresh Market

Seller: RREF SNV III-GA SJ, LLC

Sale Price: \$7,500,000

#### SRS REAL ESTATE PARTNERS

3445 Peachtree Rd NE, Suite 950 | Atlanta, GA 30326 | 404.231.2232

This information contained herein was obtained from sources deemed to be reliable; however SRS Real Estate Partners makes no guarantees, warranties or representations as to the completeness or accuracy thereof.



## Notable Grocery-Anchored Transactions



### TRADITION, THE LANDING & VILLAGE SQUARE

Port St. Lucie, FL

Anchor: Publix, Target, & Old Navy

Seller: Core Communities

Sale Price: \$72,500,000



### MARTIN DOWNS TOWN CENTER

Palm City, FL

Anchor: Publix (Shadow)

Seller: RAM Real Estate

Sale Price: \$9,300,000



### PUBLIX GREENWISE MARKET

Tallahassee, FL

Anchor: Publix GreenWise

Seller: Private

Sale Price: \$5,600,000

\*Publix Exercised ROFR



### PUBLIX CENTER PORTFOLIO

South Florida

Retail: 331,056± SF

Seller: Prudential Real Estate Investors

Aggregate Sale Price: \$50,400,000



### PORTFOLIO OF 14 GROCERY-ANCHORED CENTERS

South Carolina and Georgia

Anchor: Harris Teeter, BI-LO, & More

Seller: Private

Sale Price: \$71,000,000



### TANNEHILL PROMENADE

Bessemer, AL

Anchor: Publix, Target, Ross, & T.J.Maxx

Seller: New Century One, Ltd

Sale Price: \$38,500,000



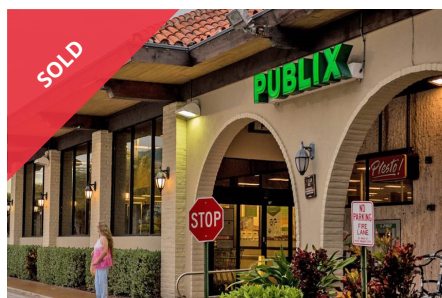
### SHANNON CROSSING

Union City, GA

Anchor: Kroger with Kroger Fuel Center

Seller: Private

Sale Price: \$15,575,000



### BLUFFS SQUARE

Jupiter, FL

Anchor: Publix

Seller: Burg & Divosta

Sale Price: \$14,900,000



### JUPITER FARMS

Jupiter, FL

Anchor: Publix

Seller: Winchester Commons, LLC

Sale Price: \$12,400,000

#### SRS REAL ESTATE PARTNERS

3445 Peachtree Rd NE, Suite 950 | Atlanta, GA 30326 | 404.231.2232

This information contained herein was obtained from sources deemed to be reliable; however SRS Real Estate Partners makes no guarantees, warranties or representations as to the completeness or accuracy thereof.

## Notable Grocery-Anchored Transactions



### TEQUESTA SHOPPES

Tequesta, FL

Anchor: Publix

Seller: Regency Centers

Sale Price: \$9,500,000



### SHOPS OF MARCO

Marco Island, FL

Anchors: Publix, & Walgreens

Seller: Prudential RE Investors

Sale Price: \$7,800,000



### RYANWOOD SQUARE

Vero Beach, FL

Anchors: Publix, & Books-A-Million

Seller: Biata International

Sale Price: \$9,125,000

## Maximizing the Value of Retail Assets Throughout the Southeast and the U.S.



### KYLE STONIS, CCIM

Managing Principal, IPG

Atlanta, GA

678.420.1393

kyle.stonis@srsre.com



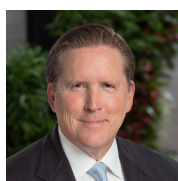
### PIERCE MAYSON

Managing Principal, IPG

Atlanta, GA

404.231.4696

pierce.mayson@srsre.com



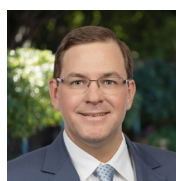
### STEVE MISKEW

Managing Principal, IPG

Fort Lauderdale, FL

954.400.2746

steve.miskew@srsre.com



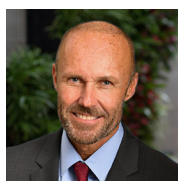
### PATRICK NUTT

Executive Vice President, NNLG

Fort Lauderdale, FL

954.302.7365

patrick.nutt@srsre.com



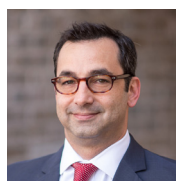
### KEVIN YARYAN

Senior Vice President, IPG

Orlando, FL

407.563.6121

kevin.yaryan@srsre.com



### JED MANDEL, CCIM

Senior Vice President, IPG

Houston, TX

281.661.3223

jed.mandel@srsre.com



### GILES STEVENS, CCIM

Vice President, NNLG

Atlanta, GA

678.686.0257

giles.stevens@srsre.com



### BORIS SHILKROT

Sr. Financial Analyst, IPG

Atlanta, GA

678.420.1388

boris.shilkrot@srsre.com